



<http://www.diva-portal.org>

This is the published version of a paper published in *Nutrition Journal*.

Citation for the original published paper (version of record):

Bodén, S., Wennberg, M., Van Guelpen, B., Johansson, I., Lindahl, B. et al. (2017)
Dietary inflammatory index and risk of first myocardial infarction: a prospective population-based study.

Nutrition Journal, 16: 21

<https://doi.org/10.1186/s12937-017-0243-8>

Access to the published version may require subscription.

N.B. When citing this work, cite the original published paper.

Permanent link to this version:


<http://urn.kb.se/resolve?urn=urn:nbn:se:umu:diva-133833>

RESEARCH

Open Access



Dietary inflammatory index and risk of first myocardial infarction; a prospective population-based study

Stina Bodén^{1*} , Maria Wennberg², Bethany Van Guelpen¹, Ingegerd Johansson², Bernt Lindahl³, Jonas Andersson⁴, Nitin Shivappa^{5,6,7}, James R. Hebert^{5,6,7} and Lena Maria Nilsson^{2,8}

Abstract

Background: Chronic, low-grade inflammation is an established risk factor for cardiovascular disease. The inflammatory impact of diet can be reflected by concentrations of inflammatory markers in the bloodstream and the inflammatory potential of diet can be estimated by the dietary inflammatory index (DIITM), which has been associated with cardiovascular disease risk in some previous studies. We aimed to examine the association between the DII and the risk of first myocardial infarction (MI) in a population-based study with long follow-up.

Method: We conducted a prospective case–control study of 1389 verified cases of first MI and 5555 matched controls nested within the population-based cohorts of the Northern Sweden Health and Disease Study (NSHDS), of which the largest is the ongoing Västerbotten Intervention Programme (VIP) with nearly 100 000 participants during the study period. Median follow-up from recruitment to MI diagnosis was 6.4 years (6.2 for men and 7.2 for women). DII scores were derived from a validated food frequency questionnaire (FFQ) administered in 1986–2006. Multivariable conditional logistic regression models were used to estimate odds ratios (OR) and 95% confidence intervals (CI), using quartile 1 (most anti-inflammatory diet) as the reference category. For validation, general linear models were used to estimate the association between the DII scores and two inflammatory markers, high-sensitivity C-reactive protein (hsCRP) and interleukin 6 (IL-6) in a subset ($n = 605$) of the study population.

Results: Male participants with the most pro-inflammatory DII scores had an increased risk of MI [OR_{Q4vsQ1} = 1.57 (95% CI 1.21–2.02) $P_{\text{trend}} = 0.02$], which was essentially unchanged after adjustment for potential confounders, including cardiovascular risk factors [OR_{Q4vsQ1} = 1.50 (95% CI 1.14–1.99), $P_{\text{trend}} = 0.10$]. No association was found between DII and MI in women. An increase of one DII score unit was associated with 9% higher hsCRP (95% CI 0.03–0.14) and 6% higher IL-6 (95% CI 0.02–0.11) in 605 controls with biomarker data available.

Conclusion: A pro-inflammatory diet was associated with an elevated risk of first myocardial infarction in men; whereas for women the relationship was null. Consideration of the inflammatory impact of diet could improve prevention of cardiovascular disease.

Keywords: DII Dietary inflammatory index, MI Myocardial infarction, NSHDS Northern Sweden health and disease study, VIP Västerbotten intervention programme, MONICA Monitoring of trends and determinants in cardiovascular disease, CVD cardiovascular disease, hsCRP high-sensitivity C-reactive protein, IL-6 interleukin 6

* Correspondence: stina.boden@umu.se

¹Department of Radiation Sciences, Oncology, Umeå University, Umeå SE-901 87, Sweden

Full list of author information is available at the end of the article



Background

Low-grade, systemic inflammation in the human body is associated with several chronic diseases and there is evidence that diet might affect the incidence of cardiovascular disease (CVD) through inflammatory mechanisms [1–5]. The impact of diet on chronic low-grade inflammation can be reflected by concentrations of inflammatory markers in the bloodstream, including cytokines, acute-phase proteins, soluble adhesion molecules and cytokine receptors [6]. A diet high in red meat, high-fat dairy, refined grains, processed meat, sweets, desserts and sugar-sweetened soft drinks has been associated with higher circulating levels of inflammatory markers in blood samples; whereas a food pattern high in fruits, vegetables and whole grains has been inversely related to inflammatory markers, such as C-reactive protein (CRP) and interleukin-6 (IL-6) [5–10]. Furthermore, a diet rich in fibre and low in fat and sugar was reported to be associated with lower systematic inflammation, which also has been suggested to have a protective role against CVD [11, 12].

The contribution of inflammation to the progression of atherosclerosis is well established, as is the association with CVD [13–17]. Atherosclerosis, characterized by accumulation of lipids, foam cell leucocytes, and fibrous elements in the large arteries, is associated with thrombosis, a complication responsible for myocardial infarction (MI) and most strokes. Multiple studies have confirmed that chronic low-grade inflammation causes an increased risk of CVD, and the risk of developing CVD rises sharply with age, particularly after long exposure to an unhealthy lifestyle involving tobacco use, excessive alcohol use, lack of physical activity, stress and consumption of a diet high in fat and red meat [1, 13, 14].

The literature-derived dietary inflammatory index (DIITM) has been designed to assess the inflammatory effect of diet, in any population and independent of specific dietary assessment method [18]. A pro-inflammatory diet, as estimated by the DII, has been associated with an increased risk of CVD in several populations, [19–23]; though some conflicting results also have been published [24, 25].

The aim of this study was to examine the DII scores in relation to the risk of first myocardial infarction (MI) in a prospective study with long follow-up.

Methods

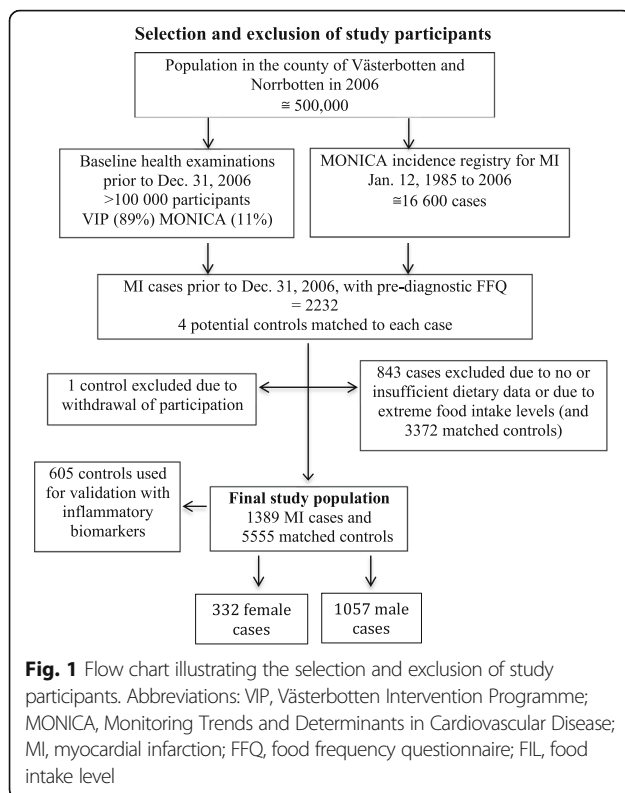
Study design and population

We performed a nested case–control study within the Northern Sweden Health and Disease Study (NSHDS). Data were collected from two NSHDS cohorts, the Västerbotten Intervention Programme (VIP) and the Northern Sweden Monitoring Trends and Determinants in Cardiovascular Disease (MONICA) Study [26, 27]. The organization, sampling procedures, availability of samples/

data, ethical considerations, and quality control program of the NSHDS are described in detail elsewhere [28]. The VIP is a long-term, ongoing programme including health interventions in the northern Swedish county of Västerbotten. All residents of Västerbotten, upon turning 40, 50 and 60 years of age (also 30 year olds during the period of 1985–1996 in all municipalities and continuously on a very small scale in some municipalities), are invited to a health screening at which they fill out a questionnaire addressing health history and lifestyle factors such as tobacco use, physical activity and diet. Participants are also asked to donate a blood sample for future research (stored in a bio-bank at –80 °C). A health examination is conducted at the screening event, including measurement of height and weight, blood pressure, blood fats and an oral glucose tolerance test as described previously [27]. The Northern Sweden MONICA Study follows essentially the same protocol as the VIP and includes 2000 or 2500 randomly selected 25–74 year olds (25–64 years in 1986) from the counties of Västerbotten and Norrbotten, stratified for age and sex and recruited approximately every 4–5 years since 1986. Mean participation rates for the time period of this study were approximately 60% for VIP and between 74 to 81% for the Northern Sweden MONICA Study. Minor selection bias has been reported for comparisons of participants and non-participants with respect to social characteristics [29]. In the present study, 89.3% of the participants were recruited through the VIP and 10.7% through the Northern Sweden MONICA Study.

The primary endpoint in this study was incidence of first definite MI (fatal and nonfatal, ICD-10 I21.0–I21.9). Cases occurring between January 1, 1986, and December 31, 2006, were identified through linkage between the NSHDS and the essentially complete and high-quality Northern Sweden MONICA Incidence Registry [30]. Exclusion criteria for cases recruited prior to 31 Dec 1999 were previous MI or stroke, or cancer other than non-melanoma skin cancer 5 years before or 1 year after MI. Exclusion criteria for cases recruited after 31 Dec 1999 were previous MI but previous stroke or cancer were not exclusion criteria.

Figure 1 illustrates the selection and exclusion of study participants recruited from the VIP and the Northern Sweden MONICA cohort. Of 2232 eligible MI cases with food frequency questionnaires (FFQ), 843 cases were excluded due to lack of, or insufficient, dietary data, or due to extreme food intake levels (FIL) (lowest and highest 1% of the distribution as well as participants with energy intake >5000 kcal/day). Each case of first MI was matched with four control participants on sex, age ($\pm 3y$), year of health examination ($\pm 3y$), study cohort (VIP/MONICA), and FFQ version. Exclusion criteria for controls were the same as for cases. One control was excluded due to withdrawal of participation after the



matching. Thus, the final study population involved 1389 MI-cases, including 332 women and 1057 men, and a total of 5555 matched controls. Median follow-up from recruitment to MI diagnosis was 6.4 years.

Background variables

Tobacco smoking was classified as daily smokers, ex-smokers (former daily smokers) or never smokers (including occasional smokers and former occasional smokers). Total cholesterol concentrations (mmol/L) were measured in serum. Diabetes was defined as self-reported diabetes mellitus or diabetes mellitus diagnosed at the health examination (according to the WHO diagnostic criteria: fasting plasma glucose concentration ≥ 7.0 mmol/L or 2-h post-load plasma glucose concentration ≥ 11.1 mmol/L in MONICA project or ≥ 12.2 mmol/L in VIP, which used capillary blood). Education was dichotomized (post-secondary academic education, yes or no). Body mass index (BMI, kg/m²) and systolic blood pressure (mmHg) were based on measurements by health care professionals. Because questions about recreational physical activity varied in the two cohorts, three different variables concerning physical activity were harmonized on a three-level scale (low, medium, high) [31].

Dietary assessment

Dietary data were collected at baseline using an optically readable, semi-quantitative FFQ, including 64 or 84

items, depending on year of measurement. Intake frequency had nine fixed alternatives (never, occasionally, 1–3 times/month, 1 time/week, 2–3 times/week, 4–6 times/week, 1 time/day, 2–3 times/day, ≥ 4 times/day). The frequency data, portion-size estimations and standard portion sizes were used to calculate daily intake of foods and nutrients. The FFQ has been validated and calibrated with repeated 24 h-recalls as well as biomarkers [32–34].

Dietary inflammatory index (DIITM)

The development of the original DII and validations using inflammatory biomarkers have been presented elsewhere [18, 35, 36]. In brief, based on a comprehensive review of the scientific literature, 45 food parameters were identified as being related to one or more of a defined set of inflammatory markers (IL-1 β , IL-4, IL-6, IL-10, TNF- α and C-reactive protein), and assigned an overall inflammatory effect score based on the strength of the association and the quality of the studies. For each parameter, food consumption data from eleven populations around the world were used to calculate global mean intakes and standard deviations. The global mean standard deviation was multiplied by the overall inflammatory effect score for each food parameter, and the sum of these food-parameter-specific contributions yields the final DII score. The DII score could range from -8.87 (maximally anti-inflammatory) to $+7.98$ (maximally pro-inflammatory).

Intakes of 30 food parameters (of a total maximum of 45) could be obtained from our FFQ and were included in our DII, including total energy, total fat, saturated fat, trans fatty acids, cholesterol, monounsaturated fat, polyunsaturated fat, omega-6 fatty acids, omega-3 fatty acids, carbohydrates, protein, fibre, alcohol, caffeine, tea, folic acid, selenium, niacin, iron, zinc, thiamin, vitamin B₂, vitamin B₆, vitamin B₁₂, vitamin A, vitamin E, vitamin C, vitamin D, magnesium and β -carotene (described with mean values and SD and compared with global mean intakes in the Additional file 1). The 15 food parameters excluded were eugenol, garlic, ginger, onion, saffron, turmeric, flanan-3-ol, flavones, flavonols, flavonones, anthocyanidins, isoflavones, pepper, thyme/oregano and rosemary. Caffeine intake was calculated as the sum of intake from coffee and tea. Tea in g/day was also kept as an independent parameter, as in the original DII.

Validation of DII using circulating inflammatory markers

In addition to the main analyses, we validated DII scores using hsCRP and IL-6, which had previously been measured in a subset of the control subjects in this study ($n = 605$ of whom 81.8% were men) with recruitment dates between 1991–1999. Enzyme-linked immunosorbent assays (ELISA) were used (IMMULITE, Diagnostic Products Corporation, USA, for hsCRP and R & D Systems, Oxford, UK, for IL-6) [37]. The data were log-

transformed and included as quartiles in general linear models, with the first DII quartile (most anti-inflammatory diet) as the reference category. β -coefficients for DII in quartiles and as continuous, as well as adjusted R^2 , were estimated in the general linear regression models. The first model was adjusted for total energy intake in kcal/day and for fasting duration prior to blood sample collection (classified to 0–4 h, 4–6 h, 6–8 h or >8 h). Fasting time is particularly relevant for IL-6 due to its shorter half-life (<2 h) and greater within-person variability compared to hsCRP [38]. The multivariable model was additionally adjusted for smoking, age, BMI, systolic blood pressure, diabetes, as well as the ratio between Apolipoprotein B and Apolipoprotein A1 (ApoB/ApoA1), which also was measured in these 605 controls.

Statistical analyses

Sex-specific quartiles of DII were calculated based on the distribution of the controls. ANOVA tests for continuous variables and Chi-Square tests for categorical variables were used to assess differences in baseline characteristics across the DII quartiles. Odds ratios (OR) and 95% confidence intervals (CI) for the risk of first MI were estimated using conditional logistic regression models with the first DII quartile (Q1, most anti-inflammatory diet) as the reference category. An energy-adjusted model, adjusted for total energy intake in kcal/day was first constructed. To account for potential confounders, we constructed a multivariable model in which covariates were selected if they altered any of the risk estimates by more than 10%, or for theoretical importance as confounders. The final model included the covariates total energy intake, smoking, systolic blood pressure, total serum cholesterol, diabetes, education level, BMI and recreational physical activity. Because some of the covariates, particularly cholesterol, diabetes and BMI, are potential mediating factors of the association between DII and CVD, we also tested models excluding each of these in sensitivity tests. Participants with missing values for categorical covariates were included in the conditional logistic regressions using dummy categories. Participants with missing values for the continuous variables (systolic blood pressure and total serum cholesterol) were not included in the conditional logistic regression (in total, $n = 127$). Heterogeneity in risk estimates between sexes was tested by Chi-square analysis. In order to reduce the risk of reverse causation between inflammation and CVD a sensitivity test was also carried out, excluding cases with less than two years between recruitment and incidence of MI. We also stratified the data at the median lag time from recruitment to MI.

Interaction analyses were performed between DII and some potentially important effect modifiers (smoking, BMI and diabetes). We calculated the relative excess risk

due to interaction (RERI) and the synergy index (S) [39]. 95% confidence intervals were determined using the approximate variance estimator [40]. We used the likelihood ratio tests of significance comparing models including versus those excluding the interaction term, in order to evaluate the significance of the multiplicative interaction.

All analyses were performed with SPSS® statistics version 23. All P values were two-tailed and P values ≤ 0.05 were considered to indicate statistical significance.

Results

Table 1 presents baseline characteristics of the 5284 men and 1660 women according to sex-specific quartiles of DII. Missing values for background information, where present, are presented as frequencies. In this study, DII scores ranged from -4.16 (most anti-inflammatory) to $+5.04$ (most pro-inflammatory), with a mean in control subjects of 0.89 (1.66) in men and 1.08 (1.59) in women. Mean age at baseline was approximately 54 years across DII quartiles. Subjects with higher DII scores were characterized by lower education, higher smoking rates, lower physical activity and, in men, higher systolic blood pressure and higher serum total cholesterol concentrations, compared to subjects with lower DII scores. Diabetes appeared to be less common in subjects with higher DII in both men and women, though the differences did not reach statistical significance (data not shown). BMI did not vary by DII score in men, whereas obesity (BMI >30) was less common and overweight (BMI >25) more common in women with higher DII scores. The lag time from recruitment to MI was shorter in men than women, median 6.2 (25th, 75th percentile: 3.5 , 9.3) and 7.2 (4.4 , 10.3) years, respectively, $P = 0.001$.

We observed statistically significant associations between the most pro-inflammatory DII scores (Q4) and both higher hsCRP and higher IL-6 in a subset of the control participants with biomarker data available (Additional file 2). In the multivariable model, an increase of one DII score unit was associated with 9% higher hsCRP (95% CI 0.03 – 0.14 , $P_{\text{trend}} = 0.003$) and 6% higher IL-6 (95% CI 0.02 – 0.11 , $P_{\text{trend}} = 0.005$). DII explained 1.7% of elevated hsCRP and 0.7% of elevated IL-6 concentrations in the energy-adjusted model (R^2 adjusted 0.017 and 0.007 respectively).

Table 2 presents the risk associations between DII and MI. Men with the highest DII scores (Q4, most pro-inflammatory diet), had a higher risk of first MI compared to men with the lowest DII scores (Q1, most anti-inflammatory diet) (energy-adjusted OR_{Q4vsQ1} 1.57 , 95% CI 1.22 – 2.02 , $P_{\text{trend}} = 0.02$). This finding was essentially unchanged by adjusting for potential confounders, though the linear trend, using DII score as a continuous

Table 1 Baseline characteristics of participants according to sex-specific quartiles of the dietary inflammatory index^a

	Men (n = 5284)				<i>p</i> ^b	Women (n = 1600)				<i>p</i> ^b
	Q1	Q2	Q3	Q4		Q1	Q2	Q3	Q4	
n	1266	1319	1299	1400		407	422	404	427	
DII					<0.001					<0.001
Mean	-1.38	0.43	1.60	2.90		-1.14	0.69	1.81	2.93	
SD	0.83	0.37	0.33	0.53		0.87	0.38	0.29	0.47	
Min	-4.16	-0.25	1.05	2.16		-3.86	0.00	1.29	2.31	
Max	-0.25	1.05	2.16	5.04		0.00	1.29	2.30	4.31	
Age at baseline (Y)					0.079					0.331
Mean	53.4	54.1	53.9	54.0		54.9	54.3	54.7	54.0	
SD	7.47	7.19	7.36	7.38		7.68	8.17	7.40	8.28	
Postsecondary education (%)	20.6	18.9	13.8	12.9	<0.001	22.4	16.1	16.3	10.8	<0.001
Missing (n)	11	18	17	9		8	7	9	4	
Smoking status (%)					<0.001					<0.001
Daily smokers	15.4	16.8	22.6	28.8		15.7	22.3	22.0	34.2	
Ex-smokers	30.5	31.2	30.1	29.6		19.9	19.9	17.8	20.1	
Non-smokers	52.8	50.8	45.7	40.6		63.1	55.9	58.4	45.4	
Missing (n)	16	17	20	15		5	8	7	1	
Physical activity (%) ^c					<0.001					<0.001
Medium	47.7	45.6	44.5	37.7		54.8	43.4	42.9	40.5	
High	17.5	13.2	11.1	8.6		12.0	11.0	9.9	11.3	
Missing (n)	18	7	9	9		8	9	9	10	
BMI (kg/m ²) (%)					0.944					0.017
<25	37.4	36.8	37.7	36.5		45.7	45.5	50.0	44.0	
25–29.9	51.1	50.3	49.9	50.7		32.9	35.3	36.9	40.7	
>30	11.5	12.9	12.3	12.8		21.4	19.2	13.1	15.2	
Missing (n)	1	1	3	0		0	0	0	0	
Diabetes (%)	8.2	7.5	6.2	5.9	0.054	7.1	8.1	5.4	4.9	0.211
Missing (n)	0	1	0	0		0	1	0	0	
Systolic BP (mmHg)					0.005					0.673
Mean	132.7	134.1	134.6	135.2		135.3	134.4	133.7	133.8	
SD	17.6	18.1	18.2	18.4		21.2	19.7	20.1	20.7	
Missing (n)	20	18	19	8		4	5	7	7	
S-cholesterol (mmol/L)					0.003					0.740
Mean	5.96	6.03	6.04	6.13		6.20	6.18	6.11	6.16	
SD	1.20	1.23	1.20	1.24		1.32	1.30	1.27	1.21	
Missing (n)	7	7	8	12		1	3	0	1	
Lag time (Y) ^d					0.498					0.142
Mean	6.80	6.81	6.41	6.43		6.88	7.79	8.14	6.96	
SD	4.05	3.87	4.00	4.08		3.88	3.96	4.17	4.26	

Q quartile, DII Dietary inflammatory index, SD Standard deviation, Y years, BMI Body mass index, BP, Blood pressure, S-cholesterol, Serum cholesterol, Lag time time from baseline to MI

^aQuartile cutoffs for DII based on the controls

^bP-values determined by ANOVA for continuous variables or Chi-Square tests for categorical variables

^cRefers to recreational physical activity

^dYears from health examination/recruitment to myocardial infarction

Table 2 The association between the dietary inflammatory index and first myocardial infarction for men and women^a

	Q1	Q2	Q3	Q4	P trend ^b			
Men								
Cases/controls (n)	210/1056	261/1058	242/1057	344/1056				
Range DII score	-4.16 – -0.25	-0.25 – 1.05	1.05 – 2.16	2.16 – 4.72				
	OR	OR	95% CI	OR	95% CI	OR	95% CI	
Energy-adjusted ^c	ref	1.22	0.98–1.51	1.12	0.88–1.42	1.57	1.21–2.02	0.018
Multivariable ^d	ref	1.20	0.95–1.53	1.13	0.87–1.45	1.50	1.14–1.99	0.097
Women								
Cases/controls (n)	75/332	90/332	72/332	95/332				
Range DII score	-3.86 – 0.00	0.00 – 1.29	1.29 – 2.31	2.31 – 4.31				
	OR	OR	95% CI	OR	95% CI	OR	95% CI	
Energy-adjusted ^c	ref	1.09	0.75–1.58	0.82	0.54–1.23	1.01	0.65–1.56	0.423
Multivariable ^d	ref	1.05	0.69–1.59	0.82	0.51–1.30	0.83	0.50–1.36	0.088

Q quartile of DII, DII Dietary inflammatory index, ref reference

^aConditional logistic regression models presented with odds ratio (OR) and 95% confidence interval (CI)

^bP for trend when DII used as a continuous variable

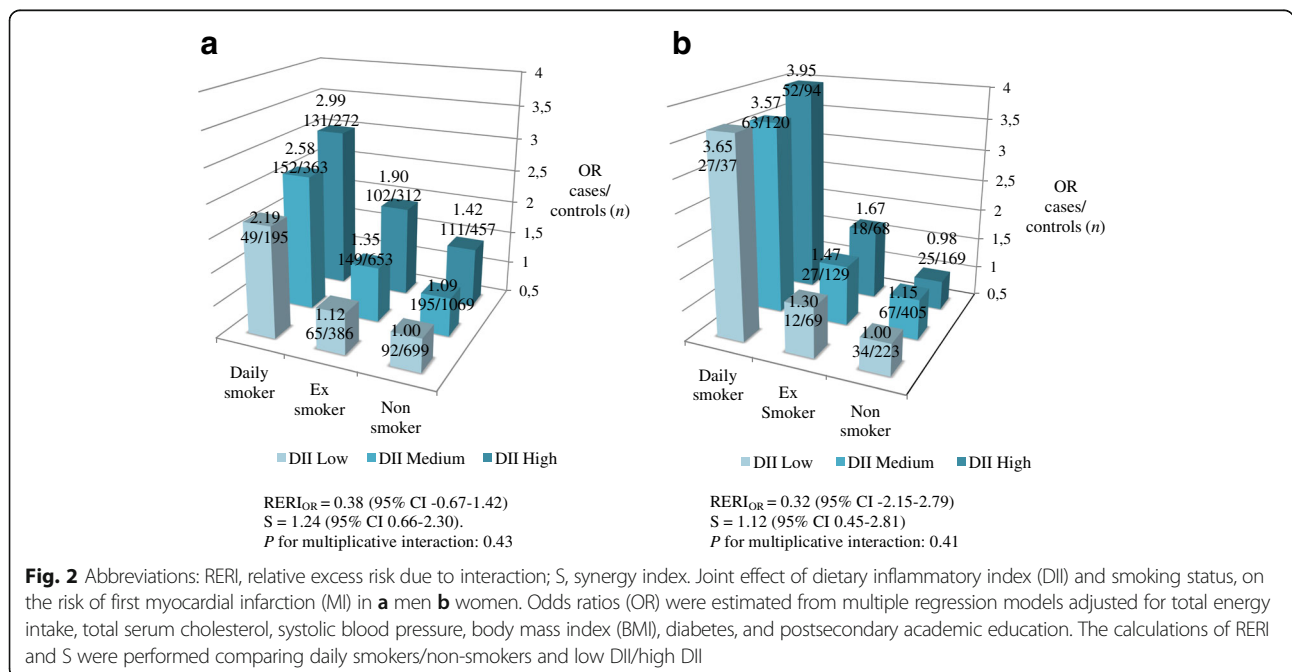
^cAdjusted for total energy intake in kcal/day

^dAdjusted for total energy intake, body mass index, physical activity, systolic blood pressure, total serum cholesterol, diabetes, smoking, and postsecondary academic education

variable, lost statistical significance (multivariable OR_{Q4vsQ1} 1.50, 1.14–1.99, $P_{\text{trend}} = 0.10$). Excluding cholesterol, BMI or diabetes, potential mediating factors, from the multivariable model had negligible effects on the risk estimates (Additional file 3). Excluding cases with less than two years between baseline and MI diagnosis did not affect the magnitude or statistical significance of the risk estimates (multivariable OR_{Q4vsQ1} for men 1.56, 95% CI 1.16–2.10, $P_{\text{trend}} = 0.10$, Additional file 3). Stratifying at the

median lag time of 6.2 years for men and 7.2 years for women also yielded largely consistent results (Additional file 3). We did not find any association between DII and MI risk in women, and the Chi-square test for heterogeneity of results between sexes was statistically significant ($P = 0.04$).

Multivariable interaction models for DII and smoking, BMI, and diabetes in relation to MI risk are presented as 3D bar graphs in Fig. 2 and Additional file 4. A positive additive interaction was found for DII and smoking in



men, although the RERI and S were not statistically significant (Fig. 2a, $RERI_{OR} = 0.38$ (95% CI -0.67 – 1.42), $S = 1.24$ (0.66–2.30)). There was no interaction on the multiplicative scale ($P = 0.43$). In women, a small positive additive interaction was seen for DII and smoking (non-significant, Fig. 2b), Neither BMI nor diabetes interacted with DII in relation to MI risk in men or women (Additional file 4).

Discussion

In this population-based, nested case–control study, men with the highest DII scores, representing the most pro-inflammatory diet, had a higher risk of first MI. In women, no association was found. We also observed a positive, but non-significant, additive interaction between the DII and smoking in relation to MI risk in both men and women, underscoring the potential importance of evaluating pro-inflammatory lifestyle behaviors as effect modifiers of the association between DII and inflammation-related disease.

Our findings are consistent with some previous results for DII and incident CVD as well as all-cause mortality [19–23]; although null associations have also been reported [24, 25]. Effect sizes for CVD risk have generally been in the range of approximately OR 1.5 to 2, which is comparable to our results for men. The DII scores in our study population were also comparable to those of previous studies [19–22, 36], including the SEASONS study, in which DII was validated against the inflammatory marker hsCRP [36]. Also in line with previous studies [35, 36], the DII was weakly, but statistically significantly, associated with both hsCRP and the inflammatory marker IL-6 in a subset of our control participants with biomarker data available. The DII based on our FFQ and applied to our study population appears to be sufficient for this type of investigation, and for interpretation of the results in relation to previous findings.

Our finding of a significant sex difference in the association between DII and MI risk was not entirely without precedent. Null results have been reported for women in other studies of DII and CVD [21, 25], though in one of the studies the female cases were few and relatively young (mean age 35.4 years) [21]. Our study included a lower number of women than men (332 and 1057 cases, respectively), which reflects the lower incidence rate and higher age at first MI in women. Although this may explain the lack of association for women in our study, the sample size should be sufficient to detect an association. Furthermore, the OR and not just the CI and P-values, are consistent with a null association. The importance of investigating sex-related differences regarding diet and CVD risk profile has been emphasized in studies of the Mediterranean diet [41, 42]. In a 12-week dietary intervention study, men had a pronounced beneficial change in long-term, post-intervention

dietary intake compared to women, as well as a greater improvement in metabolic profile [42].

Dietary changes in the northern Swedish population occurred over the study period, which might be speculated to influence our analyses. The VIP was initiated largely as a response to high CVD mortality rates in the county of Västerbotten in the mid-1980s [26, 27]. It is a strategic, population-wide programme involving both general initiatives, such as a healthy choice “key hole” label on foods, and individual health screening and lifestyle counseling. An impact of the VIP on all-cause and cardiovascular mortality has been reported [43]. However, a low-carbohydrate/high-fat dietary trend also occurred in Sweden toward the end of our study period [44]. Total fat intake (contributing essentially to a more pro-inflammatory DII score) began to increase after 2004 in both sexes, but more so in women, after decreasing during the first seven years of the VIP (1986–1992), and total serum cholesterol concentrations, after decreasing for several years, leveled off in 2004–2007 and then began to rise [45]. Although such temporal changes were probably reflected in the DII, the use of a matched case–control rather than cohort design for our study minimized the potential bias related to changes in dietary habits in the population during the data collection period.

Underreporting of dietary intake is a known problem in nutritional epidemiology. In a validation of our FFQ using repeated 24-h recalls, the prevalence and magnitude of underreporting of energy intake were directly related to BMI [46], and especially foods characterized as socially undesirable (e.g., high-fat foods and simple carbohydrates) were underreported [47, 48]. This may explain why BMI did not demonstrate an expected direct relationship with DII, and emphasizes the importance of adjusting for BMI and energy intake in studies using dietary data. Underreporting is most likely to lead to underestimation of diet-disease relations, and the null finding in women could be explained by sex-differential social desirability bias that is much more pronounced in women [48–50].

BMI has the potential to act as a mediator between diet, low-grade chronic inflammation and inflammation-related diseases, and not just as a confounder. Body fatness creates a pro-inflammatory metabolic environment, and BMI is positively related to CRP and other inflammatory markers [3, 4]. For this reason, as for the other potential mediating factors, total serum cholesterol concentrations and diabetes, we tested sequential exclusion from the multivariable model with no material effects on risk estimates. Although we excluded subjects with extreme energy intakes, underreporting is still an issue in self-reported FFQs.

Diabetes did not demonstrate the expected direct relationship with a more pro-inflammatory diet, (higher DII scores). Rather, an opposite trend was observed, though it did not reach statistical significance. This is not consistent with the causal chain, in which low-grade inflammation contributes to the development of metabolic diseases. Participants with diabetes may, speculatively, have changed their dietary patterns after advice from health care professionals.

The effect sizes observed for the DII in relation to cardiovascular endpoints are generally modest [19–23], which is not surprising, given the many other potential contributing factors to low-grade chronic inflammation. However, the general consistency of results suggests that the inflammatory impact of diet is a potential target for CVD prevention. Also, an anti-inflammatory diet, characterized by a low intake of saturated fat, high intake of vegetables and fibre, is beneficial for preventing CVD through mechanisms other than inflammation, such as lowering blood lipids and thus reducing the risk of thrombosis.

The main strengths of this study include its prospective design, which minimizes recall bias and reverse causation, and the population-based nature of the study cohorts. The sample size was large ($n = 6944$, including 1389 cases), with enough statistical power for subgroup and interaction analyses. However, there are also limitations. We were only able to include 30 of the 45 food parameters in the original DII. The 15 parameters excluded were all anti-inflammatory, which may have contributed to more pro-inflammatory DII scores. Other studies investigating the DII in relation to cardiovascular disease had similar exclusions of food parameters characterized as anti-inflammatory [21, 23]. The semi-quantitative FFQ has inherent weaknesses, particularly underreporting, but it has demonstrated validity similar to other FFQs [32–34]. Our analyses were based on a single health-screening occasion per participant, and we can, therefore, not account for intra-individual changes in dietary and lifestyle habits. Although we lacked data on aspirin use, we were able to adjust for a number of important cardiovascular risk factors. As always with observational studies, we cannot answer the question of causality, and thus a causal relationship between a predictor and the outcome cannot be confirmed.

Conclusions

In this prospective, population-based study with long follow-up, a more pro-inflammatory diet as estimated by the DII was associated with an increased risk of first MI in men. These findings support inflammation as a link between diet and cardiovascular risk as well as the usefulness of the DII for estimating the inflammatory impact of diet.

Additional files

Additional file 1: Food parameters included in the NSHDS-DII. (DOCX 113 kb)

Additional file 2: Associations between Dietary inflammatory index and the inflammatory biomarkers C-reactive protein and Interleukin 6. (DOCX 92 kb)

Additional file 3: Sensitivity and subgroup analyses for the association between the dietary inflammatory index and myocardial infarction. (DOCX 136 kb)

Additional file 4: Statistical interactions with DII-BMI and DII-diabetes. (PDF 786 kb)

Acknowledgements

The authors would like to thank the participants in the Västerbotten Intervention Programme and the Northern Sweden MONICA Study as well as the funds supporting the Northern Sweden Diet Database, the Västerbotten Intervention Project, and the MONICA project. The Swedish Research Council is acknowledged for supporting the building of the database. Thanks also to Robin Myte for statistical support and the personal at the Department of Biobank Research (EBF) for technical support, all at Umeå University, Sweden.

Funding

SB is supported by the Cancer Research Fund in Northern Sweden (LP 16–2107) and the National Cancer Foundation in Sweden (CAN 2014/780). SB was also supported for publishing costs by ARCUM, Arctic Research Centre at Umeå University. Drs. Shivappa, Hébert, were supported by the United States National Institute for Diabetes, Digestive and Kidney Diseases (grant no. R44DK103377). Funding sources had no role in the design, analysis or writing of this study. This study reflects the views of the authors only.

Availability of data and materials

The data that support the findings of this study are available from the Department of Biobank Research at Umeå University, Sweden, but restrictions apply to the availability of these data, which were used under license for the current study, and so are not publicly available. Data are however available from the authors upon reasonable request and with permission of the Department of Biobank Research at Umeå University, Sweden.

Authors' contributions

SB, MW, LMN, and BVG. contributed to the study concept and design; S.B. performed all data analyses and was the main author; MW, LMN, B.L, JA, and IJ contributed to the acquisition of data; MW, LMN and BVG. assisted in the data analyses; NS and JRH. designed the Dietary inflammatory index (DIITM); LMN together with NS prepared the syntax for the DII in the Northern Sweden Health and Disease Study (NSHDS); all authors contributed to the interpretation of the results and drafting and/or revision of the manuscript, and all authors approved the final, submitted version of the manuscript.

Competing interests

Dr. James R. Hébert owns controlling interest in Connecting Health Innovations LLC (CHI), a company planning to license the right to his invention of the dietary inflammatory index (DII) from the University of South Carolina in order to develop computer and smart phone applications for patient counseling and dietary intervention in clinical settings. Dr. Nitin Shivappa is an employee of CHI. None of the other authors declares any competing interest.

Consent for publication

Not applicable.

Ethics approval and consent to participate

The study was approved by the Regional Ethics Review Board of Northern Sweden (Dnr 2013/332–31). All study subjects provided written informed consent at time of the recruitment into the NSHDS, and the study was conducted in accordance with the Declaration of Helsinki.

Publisher's Note

Springer Nature remains neutral with regard to jurisdictional claims in published maps and institutional affiliations.

Author details

¹Department of Radiation Sciences, Oncology, Umeå University, Umeå SE-901 87, Sweden. ²Department of Public Health and Clinical Medicine, Nutritional Research, Umeå University, Umeå SE-901 87, Sweden. ³Department of Public Health and Clinical Medicine, Occupational and Environmental Medicine, Umeå University, Umeå SE-901 87, Sweden. ⁴Department of Public Health and Clinical Medicine, Research Unit Skellefteå, Umeå University, Umeå SE-901 87, Sweden. ⁵Cancer Prevention and Control Program, University of South Carolina, 915 Greene Street, Suite 241, Columbia, SC 29208, USA. ⁶Department of Epidemiology and Biostatistics, Arnold School of Public Health, University of South Carolina, Columbia, SC 29208, USA. ⁷Connecting Health Innovations LLC, 1417 Gregg St., Columbia, SC 29201, USA. ⁸Arctic Research Centre (Arcum), Umeå University, Umeå SE-901 87, Sweden.

Received: 3 November 2016 Accepted: 26 March 2017

Published online: 04 April 2017

References

- Meyer J, Döring A, Herder C, Roden M, Koenig W, Thorand B. Dietary patterns, subclinical inflammation, incident coronary heart disease and mortality in middle-aged men from the MONICA/KORA Augsburg cohort study. *Eur J Clin Nutr*. 2011;65(7):800–7. <http://www.nature.com/ejcn/journal/v65/n7/pdf/ejcn201137a.pdf>. doi:10.1038/ejcn.2011.37.
- Conti P, Shaik-Dasthagirisaeb Y. Atherosclerosis: a chronic inflammatory disease mediated by mast cells. *Cent Eur J Immunol*. 2015;40(3):380–6. <https://www.ncbi.nlm.nih.gov/pubmed/26648785>. doi:10.5114/ceji.2015.54603.
- Egger G, Dixon J. Inflammatory effects of nutritional stimuli: further support for the need for a big picture approach to tackling obesity and chronic disease. *Obes Rev*. 2010;11(2):137–49. <http://onlinelibrary.wiley.com/store/10.1111/j.1467-789X.2009.00644.x/asset/j.1467-789X.2009.00644.x.pdf?v=1&t=im38xo3n&s=17aed3e5528d13756684c5d91ae5778c0382060>.
- Calder PC, Ahluwalia N, Brouns F, Buetler T, Clement K, Cunningham K, et al. Dietary factors and low-grade inflammation in relation to overweight and obesity. *Br J Nutr*. 2011;106(S3):S1–S78.
- Nettleton JA, Steffen LM, Mayer-Davis EJ, Jenny NS, Jiang R, Herrington DM, et al. Dietary patterns are associated with biochemical markers of inflammation and endothelial activation in the Multi-Ethnic Study of Atherosclerosis (MESA). *Am J Clin Nutr*. 2006;83(6):1369–79. <https://www.ncbi.nlm.nih.gov/pubmed/16762949>. PMID:16762949.
- Esmailzadeh A, Kimiagar M, Mehrabi Y, Azadbakht L, Hu FB, Willett WC. Dietary patterns and markers of systemic inflammation among Iranian women. *J Nutr*. 2007;137(4):992–8. <Go to ISI>://WOS:000245230700023.
- King DE, Egan BM, Geesey ME. Relation of dietary fat and fiber to elevation of C-reactive protein. *Am J Cardiol*. 2003;92(11):1335–9. http://acels-cdn.com/S0002914903011937/1-s2.0-S0002914903011937-main.pdf?_tid=d0a6dbe2-f015-11e5-ab14-00000aab0f01&acdnat=1458641399_0f914cef4fa1eae86078a37ea811479.
- Neale EP, Batterham MJ, Tapsell LC. Consumption of a healthy dietary pattern results in significant reductions in C-reactive protein levels in adults: a meta-analysis. *Nutrition Research*. 2016;36(5):391–401. <Go to ISI>://WOS:000375021400001.
- van Bussel BC, Henry RM, Ferreira I, van Greevenbroek MM, van der Kallen CJ, Twisk JW, et al. A healthy diet is associated with less endothelial dysfunction and less low-grade inflammation over a 7-year period in adults at risk of cardiovascular disease. *J Nutr*. 2015;145(3):532–40.
- Smidowicz A, Regula J. Effect of nutritional status and dietary patterns on human serum C-reactive protein and interleukin-6 concentrations. *Adv Nutr*. 2015;6(6):738–47.
- Dias JA, Wirfält E, Drake I, Gullberg B, Hedblad B, Persson M, et al. A high quality diet is associated with reduced systemic inflammation in middle-aged individuals. *Atherosclerosis*. 2015;238(1):38–44. http://acels-cdn.com/S002191501401569X/1-s2.0-S002191501401569X-main.pdf?_tid=caf711d0-f015-11e5-85ec-00000aab0f26&acdnat=1458641389_0f4f00b1fc201d1c078dde3ffb83ff81.
- Hlebowicz J, Persson M, Gullberg B, Sonestedt E, Wallström P, Drake I, et al. Food patterns, inflammation markers and incidence of cardiovascular disease: the Malmö Diet and Cancer study. *J Intern Med*. 2011;270(4):365–76. <http://dx.doi.org/10.1111/j.1365-2796.2011.02382.x>.
- Prasad S, Sung B, Aggarwal BB. Age-associated chronic diseases require age-old medicine: role of chronic inflammation. *Prev Med*. 2012;54 SupplS29–37. <https://www.ncbi.nlm.nih.gov/pubmed/22178471>. doi:10.1016/j.ypmed.2011.11.011.
- Willeit P, Thompson SG, Agewall S, Bergstrom G, Bickel H, Catapano AL, et al. Inflammatory markers and extent and progression of early atherosclerosis: Meta-analysis of individual-participant-data from 20 prospective studies of the PROG-IMT collaboration. *Eur J Prev Cardiol*. 2016;23(2):194–205. <https://www.ncbi.nlm.nih.gov/pubmed/25416041>. doi:10.1177/2047487314560664.
- Libby P. Inflammation in atherosclerosis. *Nature*. 2002;420(6917):868–74. <https://www.ncbi.nlm.nih.gov/pubmed/12490960>.
- Rosenson RS, Koenig W. Utility of inflammatory markers in the management of coronary artery disease. *Am J Cardiol*. 2003;92(1):10–8.
- Pearson TA, Mensah GA, Alexander RW, Anderson JL, Cannon RO, Criqui M, et al. Markers of inflammation and cardiovascular disease application to clinical and public health practice: a statement for healthcare professionals from the centers for disease control and prevention and the American Heart Association. *Circulation*. 2003;107(3):499–511. <https://www.ncbi.nlm.nih.gov/pubmed/12551878>.
- Shivappa N, Steck SE, Hurley TG, Hussey JR, Hébert JR. Designing and developing a literature-derived, population-based dietary inflammatory index. *Publ Health Nutr*. 2014;17(08):1689–96.
- O'Neil A, Shivappa N, Jacka FN, Kotowicz MA, Kibbey K, Hebert JR, et al. Pro-inflammatory dietary intake as a risk factor for CVD in men: a 5-year longitudinal study. *Br J Nutr*. 2015;114(12):2074–82.
- García-Arellano A, Ramallal R, Ruiz-Canela M, Salas-Salvadó J, Corella D, Shivappa N, et al. Dietary inflammatory index and incidence of cardiovascular disease in the predimed study. *Nutrients*. 2015;7(6):4124–38. <https://www.ncbi.nlm.nih.gov/pubmed/26035241>.
- Ramallal R, Toledo E, Martínez-González MA, Hernández-Hernández A, García-Arellano A, Shivappa N, et al. Dietary Inflammatory Index and Incidence of Cardiovascular Disease in the SUN Cohort. *PLoS One*. 2015;10(9):e0135221. <https://www.ncbi.nlm.nih.gov/pubmed/26340022>. doi:10.1371/journal.pone.0135221.
- Graffouillere L, Deschasaux M, Mariotti F, Neufcourt L, Shivappa N, Hebert JR, et al. Prospective association between the Dietary Inflammatory Index and mortality: modulation by antioxidant supplementation in the SU.VI.MAX randomized controlled trial. *Am J Clin Nutr*. 2016;103(3):878–85. <Go to ISI>://WOS:000371650200025.
- Shivappa N, Steck SE, Hussey JR, Ma Y, Hebert JR. Inflammatory potential of diet and all-cause, cardiovascular, and cancer mortality in National Health and Nutrition Examination Survey III Study. *Eur J Nutr*. 2015;1–10. <https://www.ncbi.nlm.nih.gov/pubmed/26644215>. doi:10.1007/s00394-015-1112-x
- Alkerwi A, Shivappa N, Crichton G, Hebert JR. No significant independent relationships with cardiometabolic biomarkers were detected in the Observation of Cardiovascular Risk Factors in Luxembourg study population. *Nutrition Research*. 2014;34(12):1058–65. <Go to ISI>://WOS:000346113500005.
- Visser LE, Waller MA, van der Schouw YT, Hebert JR, Shivappa N, Schoemaker DA, et al. The relationship between the dietary inflammatory index and risk of total cardiovascular disease, ischemic heart disease and cerebrovascular disease: Findings from an Australian population-based prospective cohort study of women. *Atherosclerosis*. 2016;253:164–170. doi:10.1016/j.atherosclerosis.2016.07.929. Epub 2016 Jul 30.
- Stegmayr B, Lundberg V, Asplund K. The events registration and survey procedures in the Northern Sweden MONICA Project. *Scand J Public Health*. 2003;31(61 suppl):9–17.
- Norberg M, Wall S, Boman K, Weinehall L. The Västerbotten Intervention Programme: background, design and implications. *Glob Health Action*. 2010;3:4643. doi:10.3402/gha.v3i0.4643.
- Hallmans G, Ågren Å, Johansson G, Johansson A, Stegmayr B, Jansson J-H, et al. Cardiovascular disease and diabetes in the Northern Sweden Health and Disease Study Cohort-evaluation of risk factors and their interactions. *Scand J Public Health*. 2003;31(61 suppl):18–24.
- Weinehall L, Hallgren C-G, Westman G, Janlert U, Wall S. Reduction of selection bias in primary prevention of cardiovascular disease through involvement of primary health care. *Scand J Prim Health Care*. 1998;16(3):171–6.
- Tunstall-Pedoe H, Kuulasmaa K, Amouyel P, Arveiler D, Rajakangas AM, Pajak A. Myocardial infarction and coronary deaths in the world health organization MONICA project. Registration procedures, event rates, and

- case-fatality rates in 38 populations from 21 countries in four continents. *Circulation*. 1994;90(1):583–612.
31. Wennberg P, Lindahl B, Hallmans G, Messner T, Weinehall L, Johansson L, et al. The effects of commuting activity and occupational and leisure time physical activity on risk of myocardial infarction. *Eur J Cardiovasc Prev Rehabil*. 2006;13(6):924–30.
 32. Johansson I, Hallmans G, Wikman Å, Biessy C, Riboli E, Kaaks R. Validation and calibration of food-frequency questionnaire measurements in the northern Sweden health and disease cohort. *Publ Health Nutr*. 2002;5(03):487–96.
 33. Johansson I, Van Guelpen B, Hultdin J, Johansson M, Hallmans G, Stattin P. Validity of food frequency questionnaire estimated intakes of folate and other B vitamins in a region without folic acid fortification. *Eur J Clin Nutr*. 2010;64(8):905–13.
 34. Wennberg M, Vessby B, Johansson I. Evaluation of relative intake of fatty acids according to the Northern Sweden FFQ with fatty acid levels in erythrocyte membranes as biomarkers. *Public Health Nutr*. 2009;12(9):1477–84.
 35. Tabung FK, Steck SE, Zhang J, Ma Y, Liese AD, Agalliu I, et al. Construct validation of the dietary inflammatory index among postmenopausal women. *Ann Epidemiol*. 2015;25(6):398–405. http://ac.els-cdn.com/S1047279715001192/1-s2.0-S1047279715001192-main.pdf?_tid=dd706ef6-f015-11e5-aa82-00000aab0f02&acdnat=1458641420_c36a7b706956d723a7909a0e540a1742.
 36. Shivappa N, Steck SE, Hurley TG, Hussey JR, Ma Y, Ockene IS, et al. A population-based dietary inflammatory index predicts levels of C-reactive protein in the seasonal variation of blood cholesterol study (SEASONS). *Publ Health Nutr*. 2014;17(08):1825–33.
 37. Oellerich M. Enzyme-immunoassay: a review. *J Clin Chem Clin Biochem*. 1984;22(12):895–904. <https://www.ncbi.nlm.nih.gov/pubmed/6396369>.
 38. Danesh J, Kaptoge S, Mann AG, Sarwar N, Wood A, Angleman SB, et al. Long-term interleukin-6 levels and subsequent risk of coronary heart disease: two new prospective studies and a systematic review. *PLoS Med*. 2008;5(4):e78. <https://www.ncbi.nlm.nih.gov/pubmed/18399716>. doi:10.1371/journal.pmed.0050078
 39. VanderWeele TJ, Knol MJ. A tutorial on interaction. *Epidemiol Methods*. 2014;3(1):33–72.
 40. Hosmer DW, Lemeshow S. Confidence interval estimation of interaction. *Epidemiology*. 1992;3(5):452–6.
 41. Bedard A, Riverin M, Dodin S, Corneau L, Lemieux S. Sex differences in the impact of the Mediterranean diet on cardiovascular risk profile. *Br J Nutr*. 2012;108(8):1428–34.
 42. Leblanc V, Begin C, Hudon AM, Royer MM, Corneau L, Dodin S, et al. Gender differences in the long-term effects of a nutritional intervention program promoting the Mediterranean diet: changes in dietary intakes, eating behaviors, anthropometric and metabolic variables. *Nutr J*. 2014; 13107. <https://www.ncbi.nlm.nih.gov/pubmed/25416917>. doi:10.1186/1475-2891-13-107.
 43. Blomstedt Y, Norberg M, Stenlund H, Nystrom L, Lonnberg G, Boman K, et al. Impact of a combined community and primary care prevention strategy on all-cause and cardiovascular mortality: a cohort analysis based on 1 million person-years of follow-up in Vasterbotten County, Sweden, during 1990–2006. *BMJ open*. 2015;5:12:e009651. <https://www.ncbi.nlm.nih.gov/pubmed/26685034>.
 44. Mann J, Nye ER. Fad diets in Sweden, of all places. *Lancet*. 2009;374(9692):767–9.
 45. Johansson I, Nilsson LM, Stegmayr B, Boman K, Hallmans G, Winkvist A. Associations among 25-year trends in diet, cholesterol and BMI from 140,000 observations in men and women in Northern Sweden. *Nutr J*. 2012; 1140. <https://www.ncbi.nlm.nih.gov/pubmed/22686621>.
 46. Johansson G, Wikman Å, Åhrén A-M, Hallmans G, Johansson I. Underreporting of energy intake in repeated 24-h recalls related to gender, age, weight status, day of interview, educational level, reported food intake, smoking habits and area of living. *Publ Health Nutr*. 2001;4(04):919–27.
 47. Hebert JR, Clemow L, Pbert L, Ockene IS, Ockene JK. Social desirability bias in dietary self-report may compromise the validity of dietary intake measures. *Int J Epidemiol*. 1995;24(2):389–98. <https://www.ncbi.nlm.nih.gov/pubmed/7635601>.
 48. Hebert JR, Ma Y, Clemow L, Ockene IS, Saperia G, Stanek 3rd EJ, et al. Gender differences in social desirability and social approval bias in dietary self-report. *Am J Epidemiol*. 1997;146(12):1046–55. <https://www.ncbi.nlm.nih.gov/pubmed/9420529>.
 49. Hebert JR, Ebbeling CB, Matthews CE, Hurley TG, Ma Y, Druker S, et al. Systematic errors in middle-aged women's estimates of energy intake: comparing three self-report measures to total energy expenditure from doubly labeled water. *Ann Epidemiol*. 2002;12(8):577–86.
 50. Hebert JR, Peterson KE, Hurley TG, Stoddard AM, Cohen N, Field AE, et al. The effect of social desirability trait on self-reported dietary measures among multi-ethnic female health center employees. *Ann Epidemiol*. 2001; 11(6):417–27. <Go to ISI>/WOS:000170274300008.

Submit your next manuscript to BioMed Central and we will help you at every step:

- We accept pre-submission inquiries
- Our selector tool helps you to find the most relevant journal
- We provide round the clock customer support
- Convenient online submission
- Thorough peer review
- Inclusion in PubMed and all major indexing services
- Maximum visibility for your research

Submit your manuscript at
www.biomedcentral.com/submit

